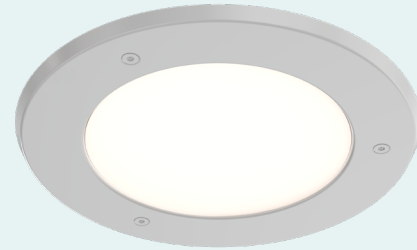


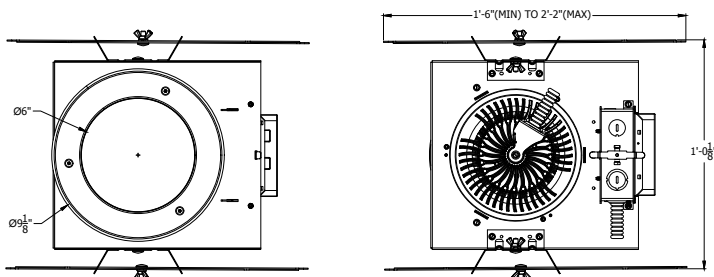
- Ligature resistant construction for use in behavioral health environments
- 6" Aperture Recessed profile for use in hard ceilings, and grid ceilings
- Tunable white with dynamic ranges between 2700K - 6500K, or 3000K - 5000K
- Wet location, IK10, IP66 when sealed from room side

### TYPICAL APPLICATIONS

Behavioral health resident room, lavatory, nursing area, activity area



### Dimensions



### Performance Data

Lumen values are from photometric tests from an accredited laboratory. Data is considered to be representative of the configurations shown, within generally accepted industry tolerances. Performance data based upon 3500K

#### BASED ON 90CRI CPL

NBDO6 TUWH															
NOMINAL LUMENS	1000			1500			2000			2500			3000		
CCT	27K	46K	65K	27K	46K	65K	27K	46K	65K	27K	46K	65K	27K	46K	65K
DELIVERED	1078	940	1034	1412	1263	1347	2081	1907	1974	2405	2217	2266	3055	2839	2852
WATTAGE	17.8	15	15.6	23.1	19.2	19.8	33.7	27.6	28.2	39.53	32.13	32.77	51.2	41.2	41.9
EFFICACY	60.56	62.67	66.28	61.13	65.78	68.03	61.75	69.09	70.00	60.84	69.00	69.15	59.67	68.91	68.07

## Catalog Number

**Example:** NBD06 MD 3000LM CPL F MVOLT TUWH PROR 90CRI NLT DARK GWAM TXPS

Series*		Distribution*		Direct Lumen Output*		Lens*		Mounting*		Voltage*		Dynamic Feature*			
NBD06	6IN Behavioral Health Downlight	ND	Narrow	1000LM	1,000 Lumens	CPL	Clear Polycarbonate	F <sup>1</sup>	Flanged or Grid	120	120V	TUWH	Tunable White		
		MD	Medium	1500LM	1,500 Lumens					277	277V				
		WD	Wide	2000LM	2,000 Lumens			GB	Flangeless Mud-In	MVOLT	120-277V				
				2500LM	2,500 Lumens										
				3000LM	3,000 Lumens										
Dynamic Range*		LED Color Rendering		Control Input*		Minimum Dimming Level*		Filters		Fusing					
RHYR	Rhythm Range (2700K-6500K)	90CRI	90CRI	NLT	nLight nTune Interface	DARK	Constant Current, Dimming to <1%	RFI	Radio Frequency Interference	GLR	Fast Blown Fuse				
PROR	Productivity Range (3000K-5000K)														
Emergency				Finish*				Mounting Hardware				Visible Hardware			
EMB310T20 <sup>3</sup>				Self contained, 90 minute emergency battery pack. 0°C (32°F) to 55°C (131°F). Meets CA Title 20 standards				GWAM				Gloss White Antimicrobial			
								GBKAM				Gloss Black Antimicrobial			
								RALTBD				RAL Color TBD			
GTD <sup>4</sup>				Generator Transfer Device								*RALTBD for pricing only. Replace with applicable RAL call out when ready to order. See the <a href="#">Architectural RAL Color Brochure</a> for available options.			
								<BLANK>				For Ceilings up to 1 1/4" thick Ceiling Thickness Adapter			
								CTA							
												TXPS			
												Painted TORX® tamper resistant screws to match luminaire finish			

\* Required Fields

### Notes

1. Requires TXPS Visible Hardware
2. Only available with GWAM
3. Not available with GTD
4. Not available with RFI and GLR

## Specifications

### Housing

Luminaire housing constructed of 16-gauge galvanized steel with telescopic mounting bars with maximum 26" and minimum 15" extension and 4" vertical adjustment.

### Lens

Impact resistant polycarbonate lens with 0.25" nominal thickness. Available with patented pending flanged or flangeless (GB) trim. If IP66 rating is required, no-pick caulk (or vandal resistant equivalent caulk) is recommended. See Installation Instructions for more detail. Lens and trim secured with tamper resistant center pin reject TORX fasteners to prevent intrusion and mitigate ligature.

### Finish

Painted in durable polyester powder coat paint with antimicrobial\* additive. Available in two standard solid matte colors. Brushed aluminum with clear coat finish also available.

\*Antimicrobial properties are built in to inhibit the growth of bacteria that may affect this product. The antimicrobial properties do not protect users or others against bacteria, viruses, germs, or other pathogens.

### Mounting

Luminaire suitable for installations in ceilings up to 1.25 inches thick (specify ceiling thickness adaptor kit for ceilings up to 2.25 thick).

### Source

RHYR or PROR 90CRI. All LED within a 2.5 step MacAdam ellipse.

### LED Life

Greater than 80% LED lumen maintenance at 60,000 hours (L80>60,000).

### Fixture Weight

Weight may vary depending upon options or accessories selected.

### Environment

Wet Location standard, IK10, IP66.

### Certification

CSA certified to meet U.S. and Canadian standards (UL1598 and UL8750) and CAN/CSA C22.2 No. 250.0. Non-IC rated

Certified for NSF Splash Zone 2 with all finishes except RALTBDD.

### Controls

Optional integrated nLight® controls make each fixture addressable - allowing it to digitally communicate with other nLight enabled controls such as dimmers, switches, occupancy sensors, and photocontrols. Connection to nLight is simple. It can be accomplished with remote nLight AIR wireless or through standard Cat-5 cabling (cabling "by others"). nLight offers unique plug-and-play convenience as devices and luminaires automatically discover each other, while nLight AIR is commissioned easily through an intuitive mobile app.

### Government Procurement

BAA – Buy American Act: This product is available in a version that qualifies as a domestic end product under the Buy American Act as implemented in the FAR and DFARS. BABA – Build America Buy America: This product is available in a version that qualifies as produced in the United States under the definitions of the Build America, Buy America Act, as implemented by 2 C.F.R. Part 184 and other agency implementing regulations, including Department of Transportation regulations. Please refer to [www.acuitybrands.com/resources/buy-american](http://www.acuitybrands.com/resources/buy-american) for additional information.

### Warranty

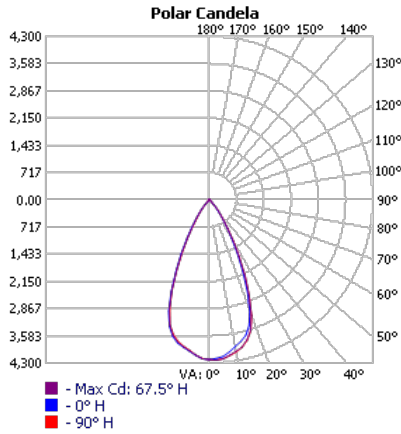
5-year limited warranty. This is the only warranty provided and no other statements in this specification sheet create any warranty of any kind. All other express and implied warranties are disclaimed. Complete warranty terms are located at: [www.acuitybrands.com/support/warranty/terms-and-conditions](http://www.acuitybrands.com/support/warranty/terms-and-conditions)

### Notes:

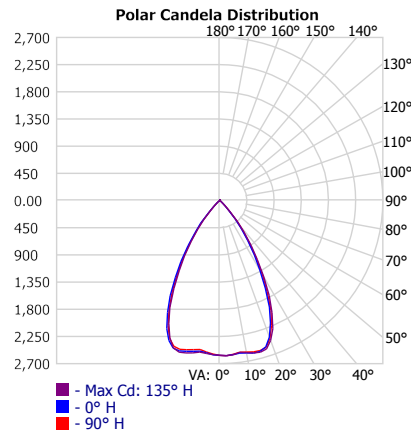
Actual performance may differ as a result of end-user environment and application. All values are design or typical values, measured under laboratory conditions at 25 °C. Specifications subject to change without notice.

## Distribution

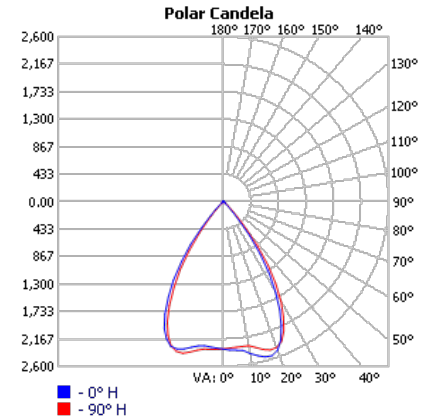
DISTRIBUTION  
NBDO6 ND



DISTRIBUTION  
NBDO6 MD



DISTRIBUTION  
NBDO6 WD



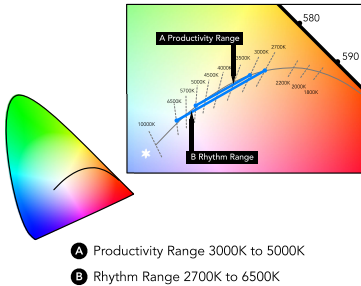
## TUNABLE WHITE GAMUT AND RANGE

Tunable White GPHD

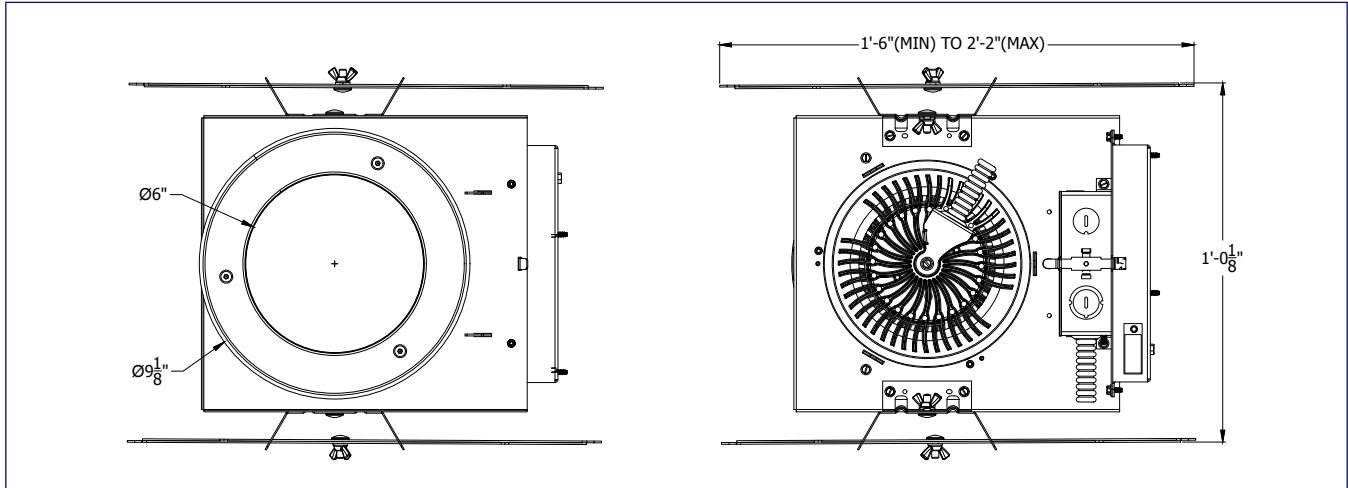
- Gamut: One dimensional Warm-Cool (WIC)
- Path: Single-segment 6500K to 2700K (Rhythm Range)
- Handle: Two Handles: Intensity and CCT
- Data: nLight with nTune technology for both handles of control

### Distribution and Lens Multiplier

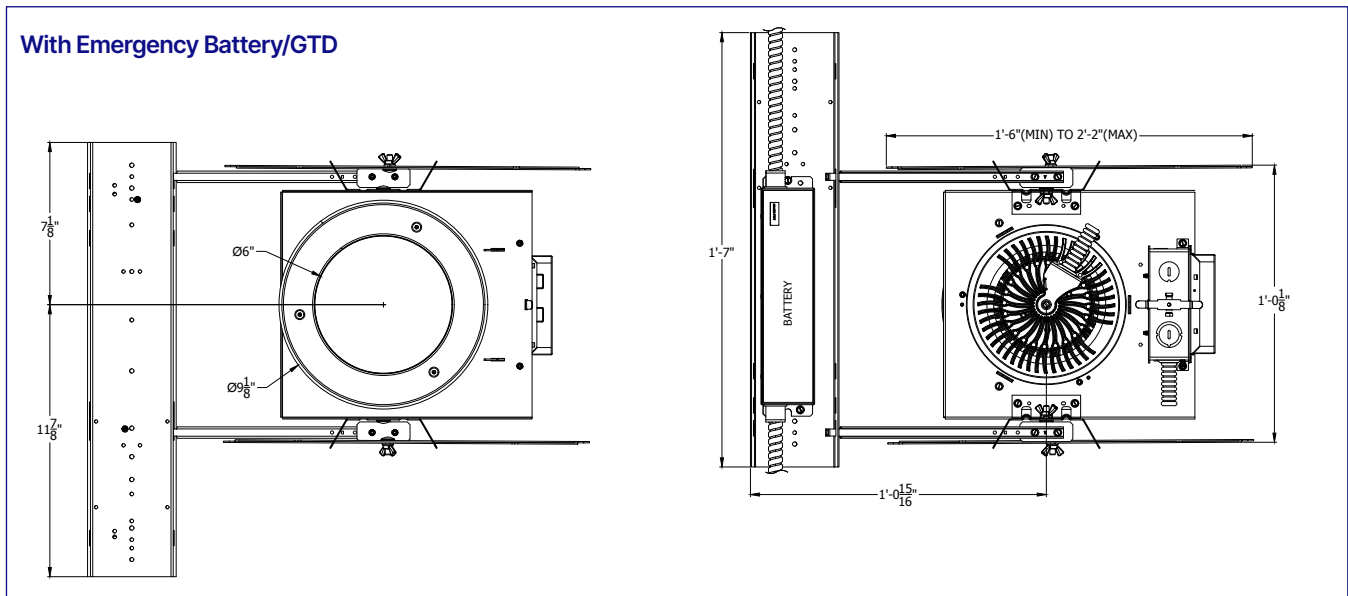
MD	1.00
ND	1.03
WD	1.04
CPL	1.000
CAL	1.04



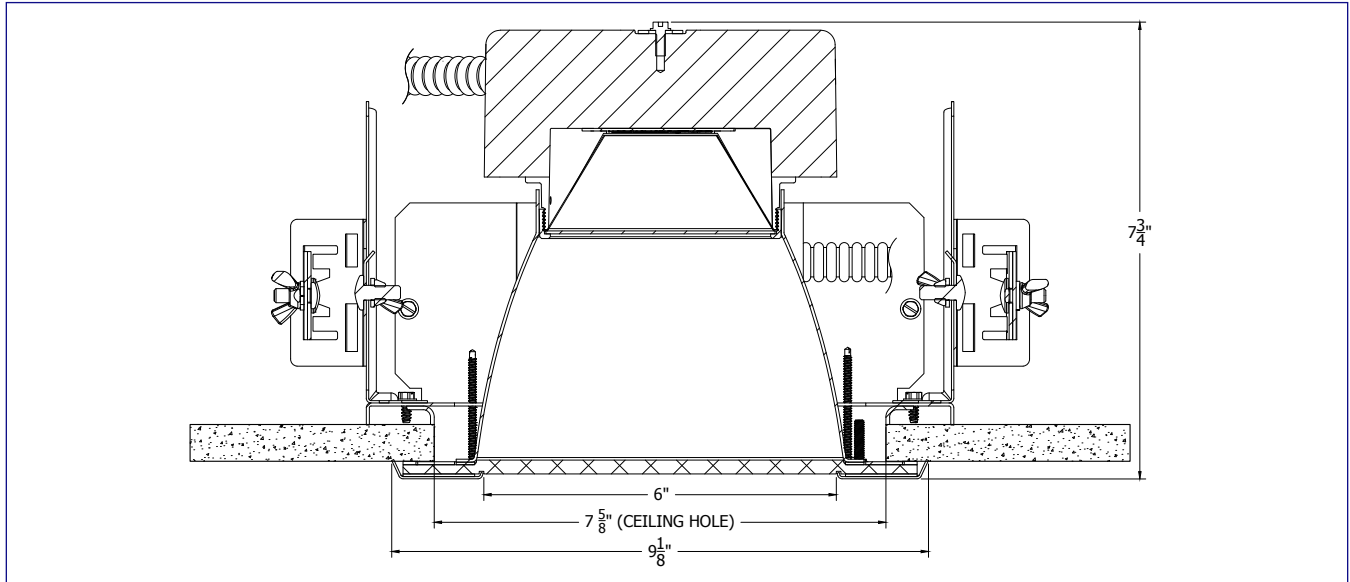
## Dimensions



## With Emergency Battery/GTD

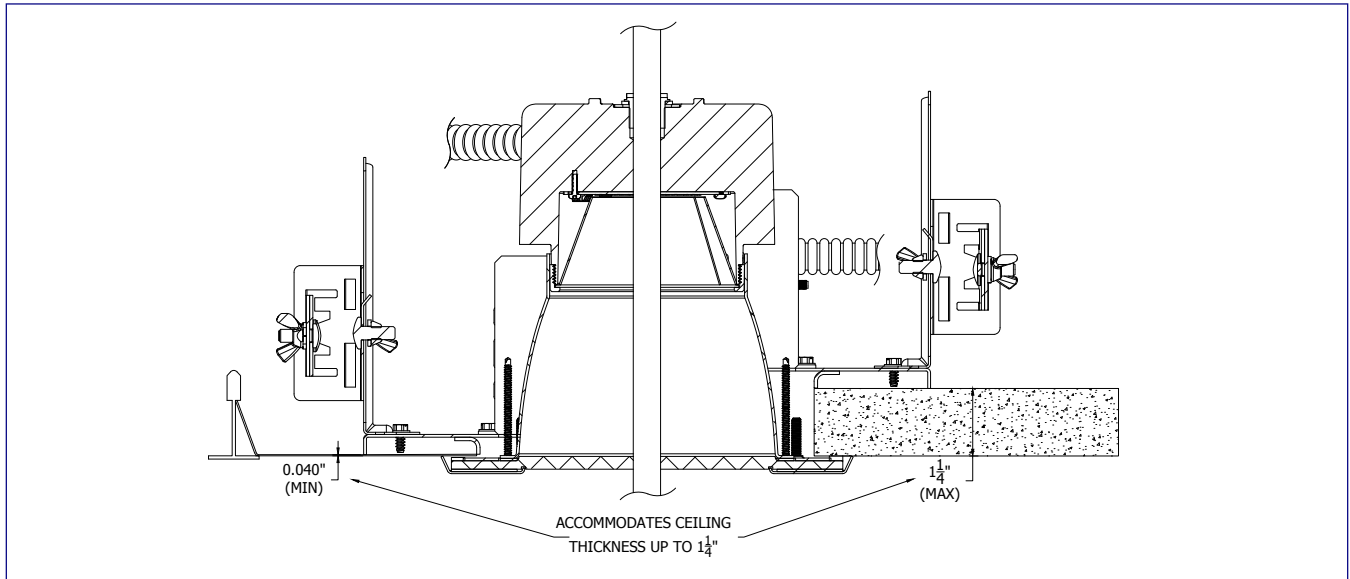


## Cross Section Details



## Details

### Finished Ceiling Thickness



### Finished CTA Ceiling Thickness

